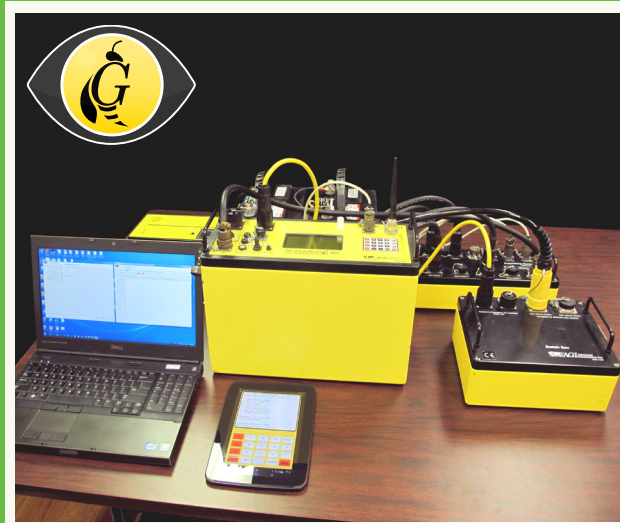


ALWAYS WATCHING, SO YOU DON'T HAVE TO

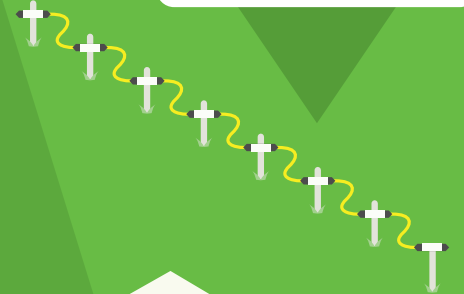
The SuperSting™ Monitoring System is an add-on module to the SuperSting™ Wi-Fi, our multi-channel electrical imaging system. It monitors landfills, well sites, dams, and other unattended locations where changes of resistivity conditions over time must be recorded and analyzed.



INSIDE CLIMATE-CONTROLLED FACILITY:

- + SuperSting™
- + Battery Bank
- + Chargers
- + Remote Monitoring Control Box
- + Internet-connected Computer

Installed electrodes
in surface placement
and/or boreholes



Not to scale

BENEFITS

This network-aware system is designed to be monitored remotely, so you can access the data no matter where you are located.

The data from the SuperSting™ Monitoring System can be used whenever you need to know changes over time.

USE CASES

- + Monitoring leaking in dams and levees
- + Monitoring leaching in landfills
- + Monitoring pollution
- + Time-lapse studies for locating landslide prone areas.

CONTACT US

 2121 Geoscience Dr.
Austin, TX, 78726, USA

 +1 512.335.3338

 +1 512.258.9958

 help@agiusa.com

 www.agiusa.com

FEATURES

The system consists of a SuperSting™ system on a remote location connected to fixed measurement cables and powered by two battery banks. The deep cycle batteries are charged constantly except when used by the SuperSting™, and the battery bank is isolated from the chargers for precision measurements during operation. The server software runs on a PC on the remote location and controls measurement tasks to execute on a time schedule.

SuperSting™ Monitoring System Technical Specification

| SuperSting™ Monitoring System | | | |
|---|----------|--|----------|
| Included with the System | Quantity | Additional Purchase Required | Quantity |
| SuperSting™ Remote Interface Box | 1 | SuperSting™ Instrument | 1 |
| Battery Charger, 12V, 30A, Lead Acid | 2 | High-Capacity Deep-Cycle 12V Batteries (We recommend the 12V, AGM type, 105 AmpHour battery manufactured by MK, part number MK8A31.) | 2 |
| Cable For Remote Interface Box - Battery Connection | 4 | Extra 12V, AGM Type, 105 AmpHour Battery (Manufactured by MK, part number MK8A31.) | 2 |
| Cable For Remote Interface Box - Battery Charger Connection | 2 | Internet Connection To Remote Site, Local Area Network Access To Server PC, Or Dial-In Modem Attached To Server PC (Including Normal Phone Line) | 1 |
| Serial Connection Cable, Male/Female DB9 Connector | 1 | Interruptible Power Supply (UPS) For The Server PC | 1 |
| RS-232 Opto Isolation Module | 1 | | |
| Adapters For The Opto Isolation Module | 2 | | |
| RS-232 Serial Communication Cable | 1 | | |
| PC Parallel Port Cable | 1 | | |
| SSRemoteServer & SSRemoteClient Software On CD | 1 | | |
| Client PC Hardware Key (Dongle) For USB Port | 1 | | |
| Client PC Hardware Key (Dongle) For USB Port | 1 | | |
| SuperSting™ Remote Instruction Manual | 1 | | |